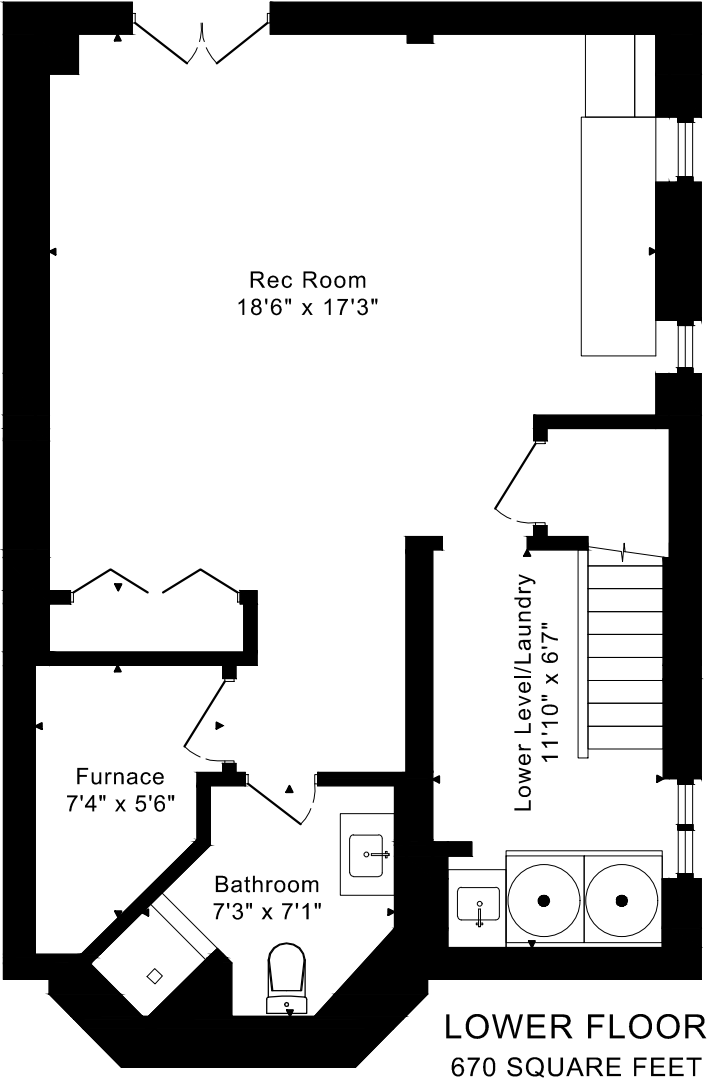
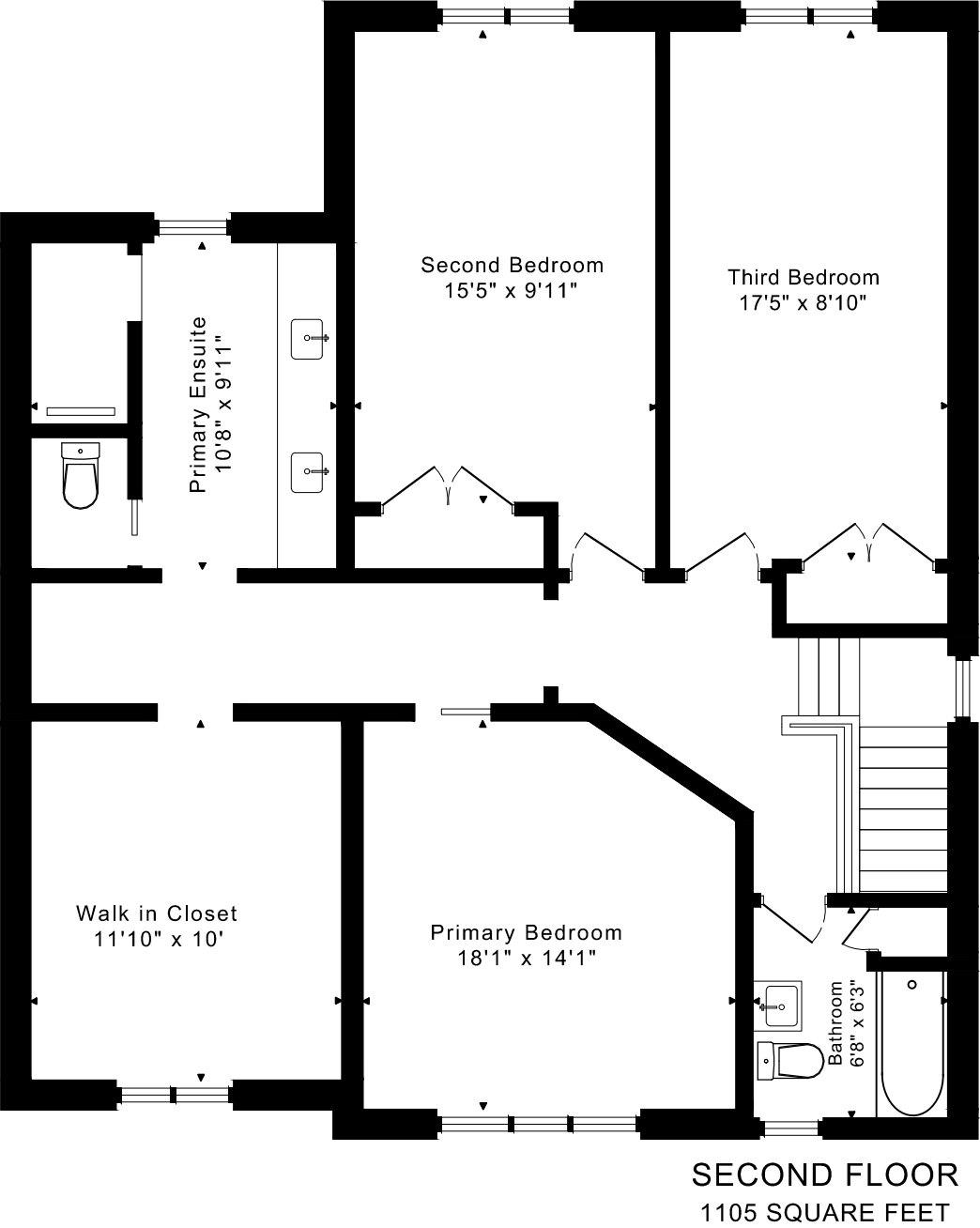
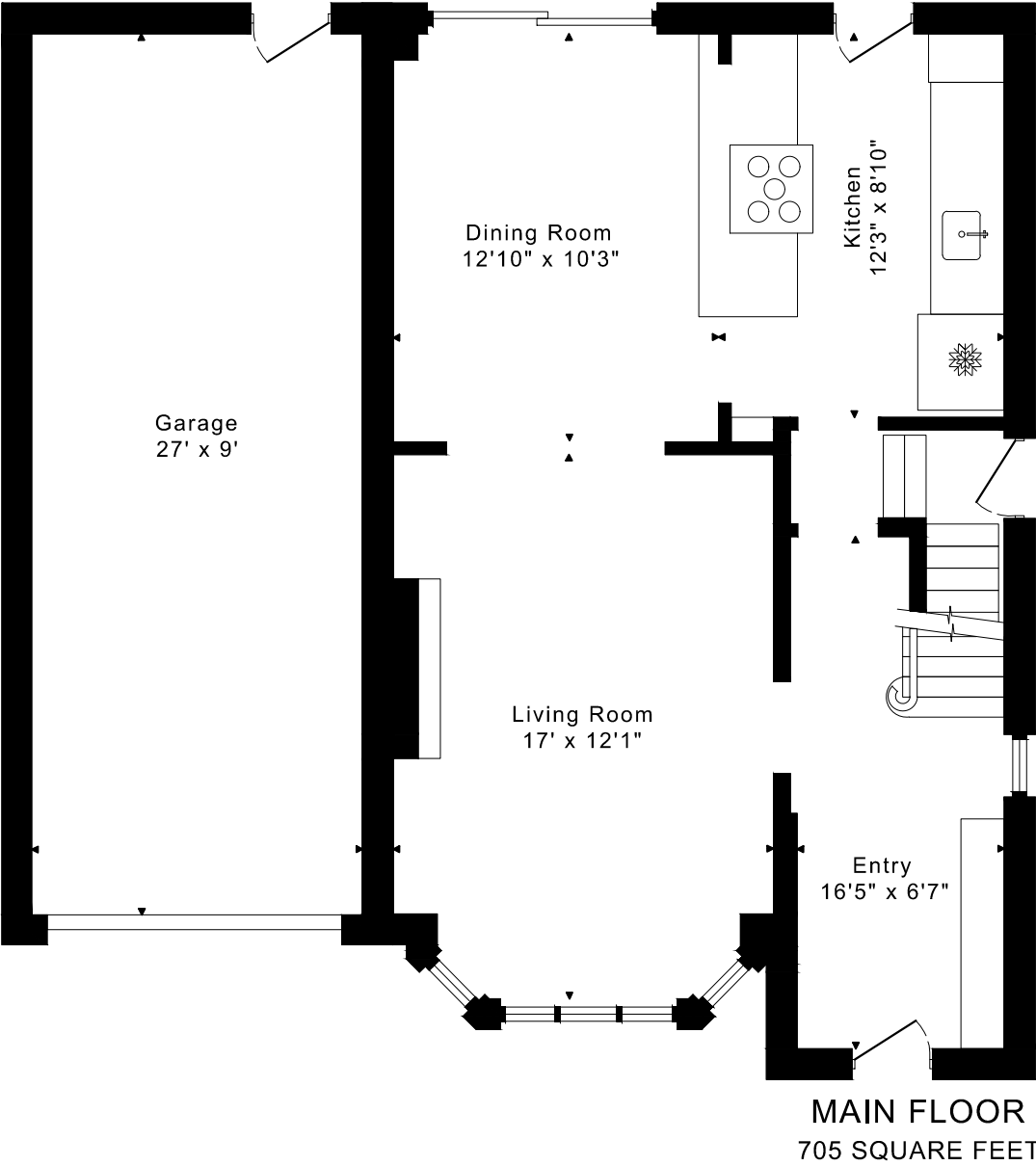


48 PARK HILL ROAD  
FLOOR PLANS

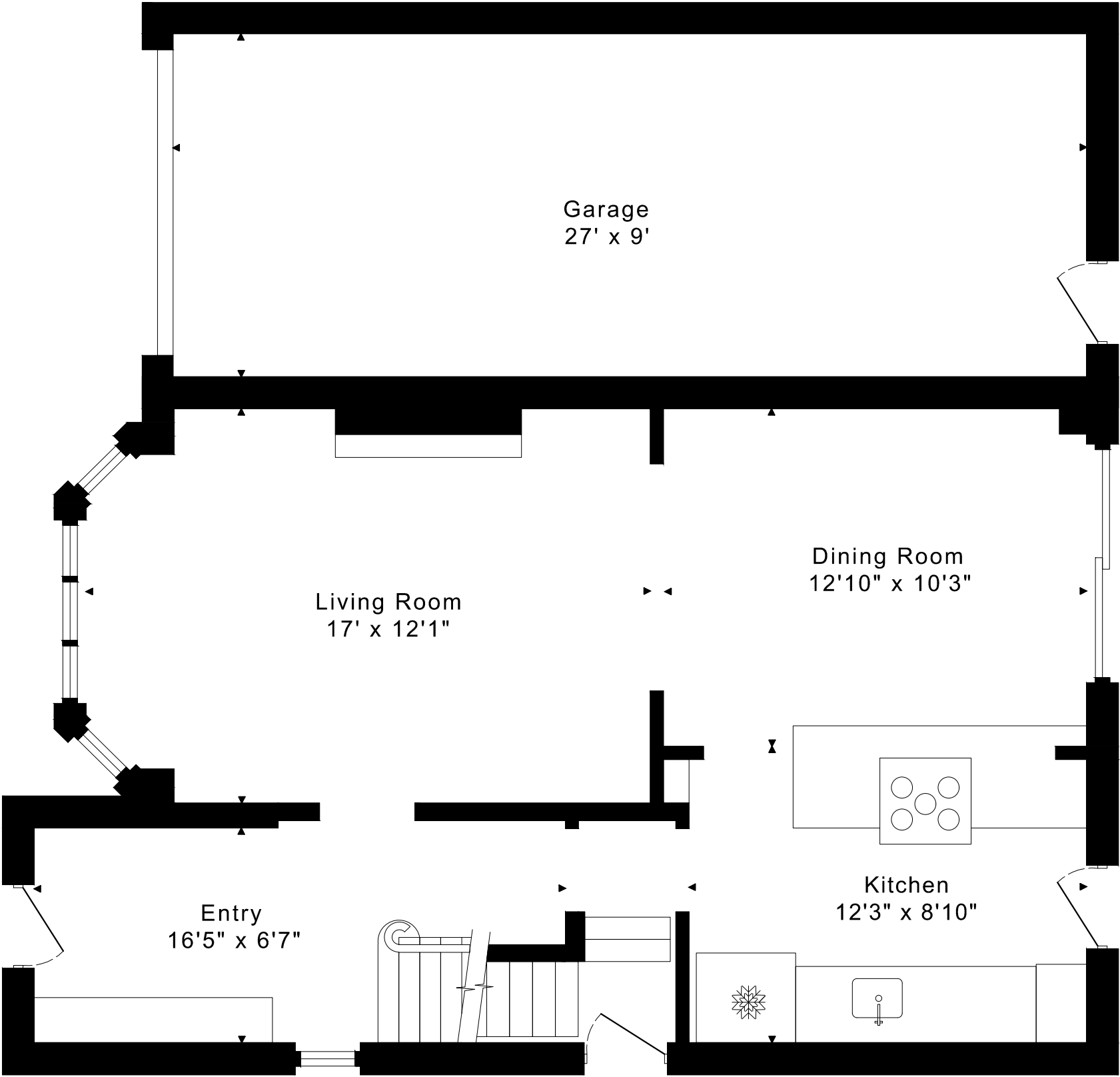


1810 sq ft + 670 sq ft  
BELOW GRADE

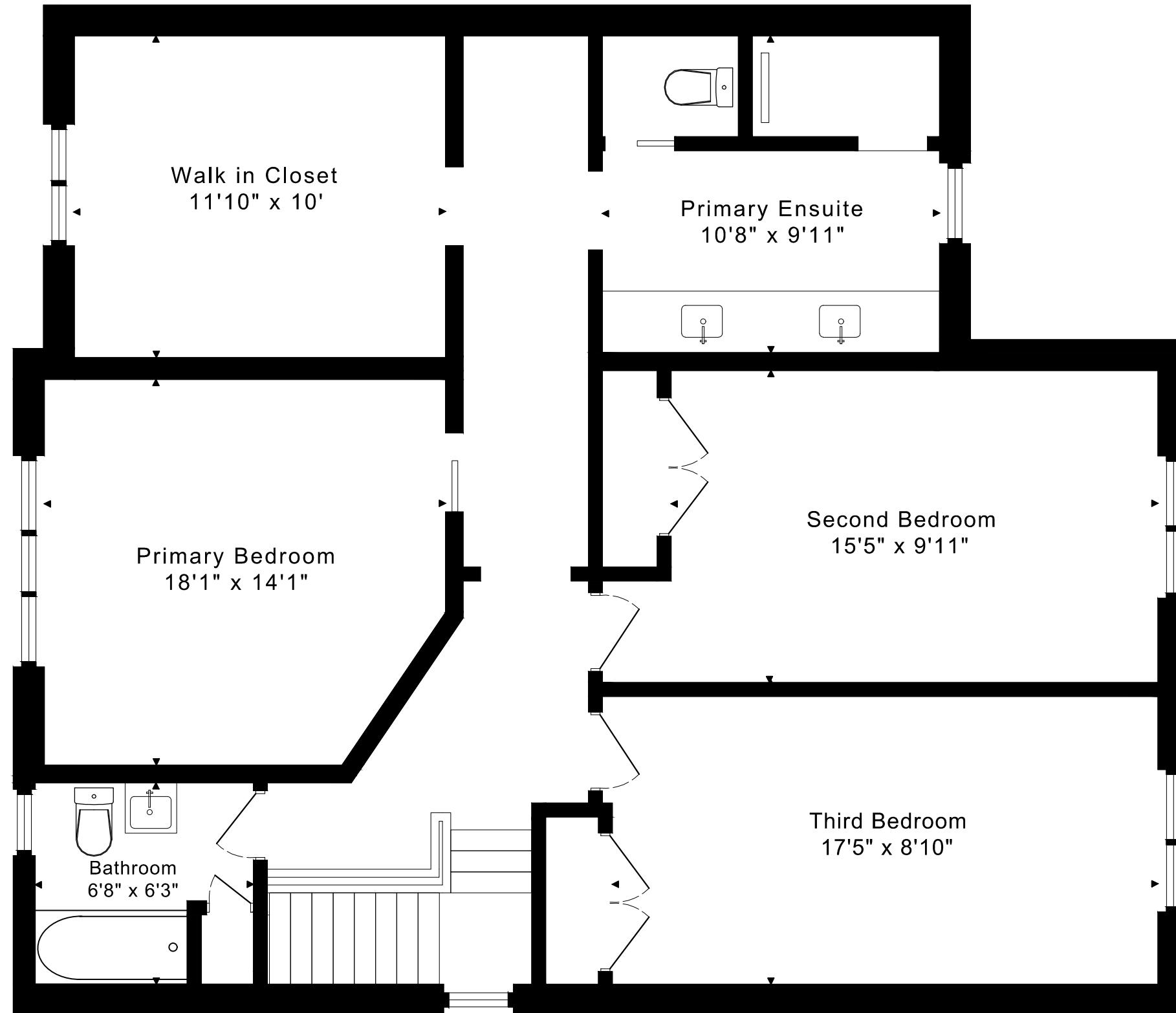
CAPTURED ON: 13 DEC 2024  
DIMENSIONS ARE APPROXIMATE AND SHOULD BE CONSIDERED  
ILLUSTRATIVE ONLY.

48 PARK HILL ROAD  
FLOOR PLANS

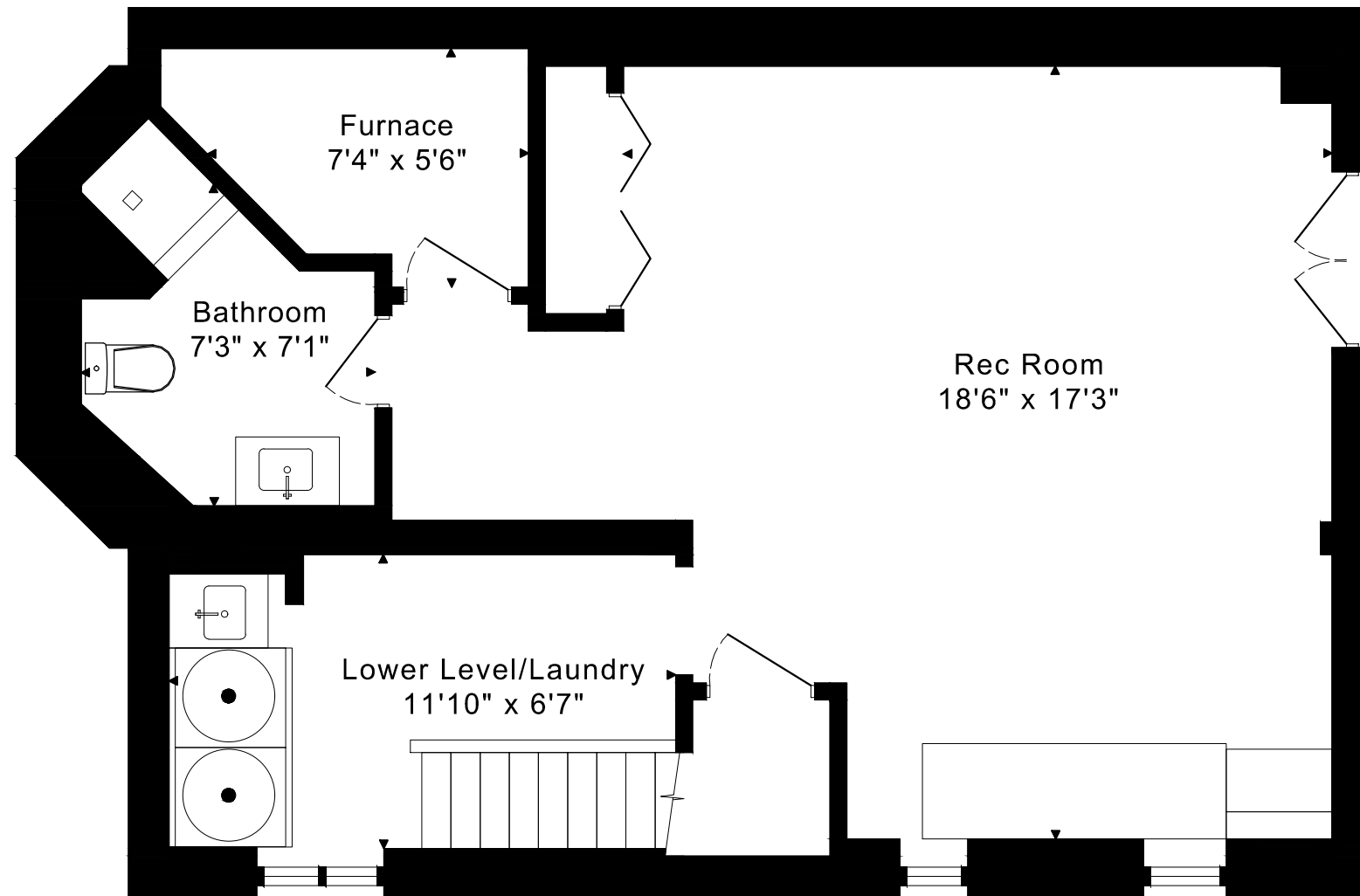
MAIN FLOOR 705 SQUARE FEET



48 PARK HILL ROAD  
FLOOR PLANS  
SECOND FLOOR 1105 SQUARE FEET



48 PARK HILL ROAD  
FLOOR PLANS  
LOWER FLOOR 670 SQUARE FEET



48 PARK HILL ROAD ROOM MEASUREMENTS

Floor	Room	Imperial				Metric [m]	
		Length		Width		Length	Width
		Feet	Inches	Feet	Inches		
Second	Primary Bedroom	12	10	12	1	3,91	3,68
	Primary Ensuite	10	8	9	11	3,25	3,02
	Walk in Closet	11	10	10	0	3,61	3,05
	Second Bedroom	15	5	9	11	4,70	3,02
	Third Bedroom	17	5	8	10	5,31	2,69
	Bathroom	6	8	6	3	2,03	1,91
Main	Entry	15	9	11	5	4,80	3,48
	Living Room	17	0	12	1	5,18	3,68
	Dining Room	12	10	10	3	3,91	3,12
	Kitchen	12	3	8	10	3,73	2,69
	Garage	27	0	9	0	8,23	2,74
Lower	Rec Room	18	6	17	3	5,64	5,26
	Bathroom	7	3	7	1	2,21	2,16
	Lower Level/Laundry	11	10	6	7	3,61	2,01
	Furnace	7	4	5	6	2,24	1,68

The following is a disclaimer regarding the approximate nature of dimensions and floor areas listed in this document:

---

**Disclaimer:**

The dimensions and floor areas listed in this document are provided as an estimate only and are intended to be used for illustration purposes only. These measurements are not necessarily meant to be a perfect representation of the actual space.

**Notes regarding measurement methods and accuracy:**

The utilization of laser measurement technology during the 3D model capturing process at the location provides an accurate representation of floor plans, with a typical margin of error of 3-5%. For the most accurate and official measurement data, it is advised to consult official documents such as MPAC records, builder's pre-construction plans, or data from certified measurement companies.

Exterior wall thickness is included in the calculation of the overall square footage and is considered as a component of the footprint. The wall thickness measurement is obtained onsite whenever possible, or estimated in the event where obtaining onsite measurements is not possible, such as in the case of condominium buildings where wall thickness may vary throughout the building.